

Sales price without tax £483.29  
Tax amount £96.66

## An Excellent Dual Band Yagi for 28/50MHz with 8.2m boom

## Performance

**F/B on 28MHz: 21.91dB @ 28.400MHz**

**Gain on 50MHz: 11.79dBi @ 50.150MHz**

**Gain on 50MHz at 10m above Ground: 17.24dBi**

**SWR 28MHz:** Below 1.4:1 from 28.00MHz to 28.600MHz

**Boom Length: 8.2m**

**Weight:** 12.25Kg / 27LB

**Turning Radius: 4.008m / 13.15ft**

**Wind Loading:** 0.43 Square Metres / 4.65 Square feet

**Wind Survival: 153KPH / 95MPH**

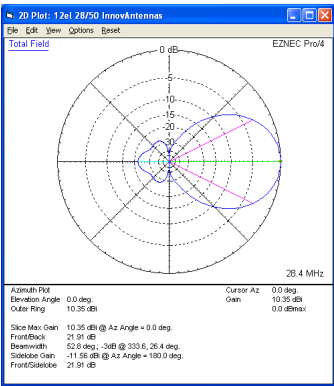
This antenna deploys elements tapering from 5/8 inch (15.88mm) to 3/8 inch (9.525mm) for 28MHz with elements starting at 1/2 inch (12.7mm) tapering through 3/8 inch (9.525mm) for 50MHz . The antenna has fully insulated elements which will ensure continuous, high

performance for many years to come. Boom to mast brackets are included with all antennas which will support 2 inch (50mm) masts. **Boom is 1.75 inch square 10SWG aluminum** (3.2mm wall) and a **Kevlar boom guy** is supplied along with **Stainless Steel turnbuckles** for adjustment.

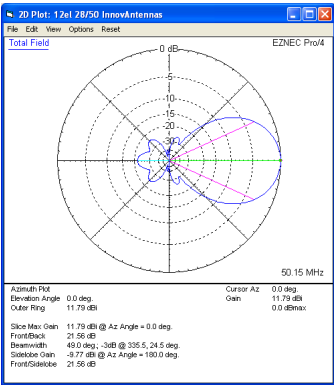
Our antennas are constructed with the best quality materials in order that the best mechanical construction can be achieved, not the cheapest and most profitable! Even a digital caliper is used to measure the elements during production to help ensure the best possible results when installed.

Note: Much development time has gone into our antennas, not just on basic electromagnetic design, we are able to model the effect of insulators, booms and other objects to ensure the make-up of our antennas has least effect on performance and pattern degradation. More information can be found [here](#)

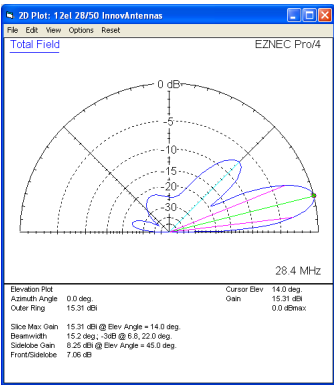
- Marine grade Stainless Steel Fittings
- Original Stauff Insulation clamps
- Mill finished boom and elements for highest levels of accuracy



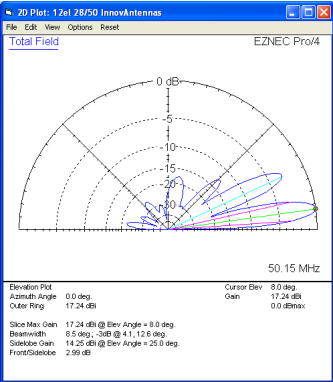
Azimuth Plot 28MHz



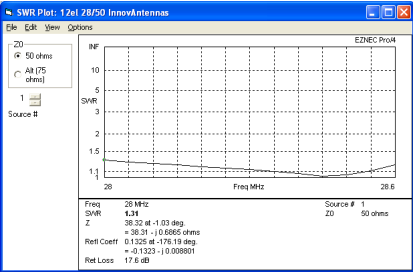
Azimuth Plot 50MHz



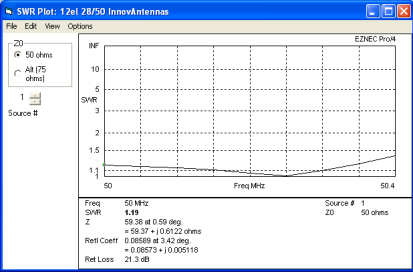
Elevation Plot 28MHz (10m above ground)



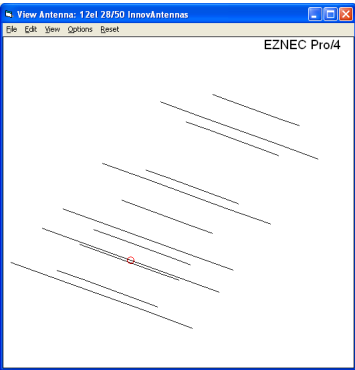
Elevation Plot 50MHz (10m above ground)



SWR 28MHz



SWR 50MHz



The 28-50-12 Antenna Layout

Manufactured the right way, not the cheapest way!