



**Sales price £429.95**

Sales price without tax £358.29  
Tax amount £71.66

A Super High Gain Quad-style beam antenna for 27Mhz for high power 20KW+

## Description

**For exact postage costs, please [This email address is being protected from spambots. You need JavaScript enabled to view it.](#)**

**A 3 element 27-28MHz (500Khz sections) LFA-Q Quad-style beam antenna handles 20KW+ !. [Second Generation LFA Yagi !](#)**

The G0KSC LFA-Q beam antenna provides a new slant on the proven quad style beam antenna. The LFA-Q is a super-strong, super-rigid Quad which provides very high levels of gain for it's size, while at the same time maximising all round performance. Hard to beat with a direct 50 Ohm feedpoint and no matching losses and suppression of unwanted noise due to the closed loop system.

**The LFA-Q is one of the only 11m antennas on the market that will handle 20KW+ out of the box. If you want to run an antenna that can take power that had excellent gain, look no further than the LFA-Q!**

The LFA-Q deploys 2 x 1.5" square booms, one at the top of the structure and one at the bottom, which enable the antenna to be ultra-rigid and stand up to extreme weather conditions such as severe ice and wind loading.

**This 3 element LFA-Q is an excellent option if you do not have space, [especially stacked !! 2 at just 8m spacing provides 16.6dBi \(when placed 10m above ground\)!!](#)**

**NOTE:** With all our HF antennas we can custom design your element taper and element size requirements in order to cater for all weather and installation requirements. [This email address is being protected from spambots. You need JavaScript enabled to view it.](#) [e-mail address is being protected from spambots. You need JavaScript enabled to view it](#) us for details.



## 2 element 27MHZ Quad

---

### Performance

**Gain:** 13.81dBi @ 27.5MHz 10m above average ground

**F/B:** 23.77dB @ 27.5MHz

**Peak Gain:** 14.01dBi

**Peak F/B:** 24.00dB

**Power Rating:** 15kw+

**SWR:** Below 1.4:1 from 27.300MHz to 27.700MHz **(Can be adjusted for CW, SSB or mixture of both)**

**Stacking Distance:** 6.5-9m ( 8m recommended)

**2 Stacked Gain @ 9m spacing:** 16.64dBi

**2 Stacked F/B:** 26dBi

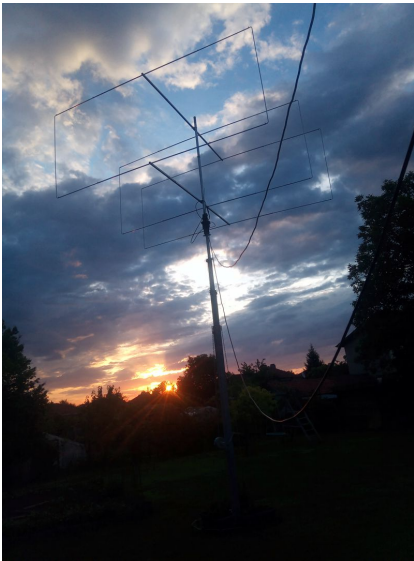
**Boom Length:** 3.2m

**Distance between booms:** 1.6m

**Weight:** 9KG / 20LB

**Turning Radius:** 2.651m / 8.7ft

**Wind Survival:** 184KPH



//