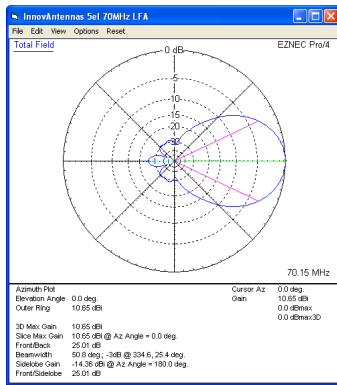


70MHz Yagis (all): 5 element 70MHz LFA Yagi



Sales price £259.95

Sales price without tax £216.63

Tax amount £43.33

A 5 element low-noise 70MHz LFA Yagi

Description

Prices 20% less for customers outside of EU

A 5 element 70MHz low-noise LFA Yagi

The G0KSC LFA Yagi is a major step forward in the development of the Yagi Antenna, **it provides a low-noise front-end for your radio so you hear more weak signals**. If you suffer with noise or are in a city location, this is the antenna for you. This compact 5 element 70Mhz LFA provides stunning performance across the whole 4m band (69.950 - 70.500MHz). Hard to beat with a direct 50 Ohm feed-point and no matching losses!!

Performance

Gain: 10.65dBi @ 70.200MHz

F/B: 25.01dB @ 70.200MHz

Peak Gain: 10.68dBi

Gain 10m above ground: 16.30dBi

Peak F/B: 25.12dB

Power Rating: 5kw

SWR: Below 1.1:1 from 69.950MHz to 70.500MHz

Boom Length: 3.110m

Stacking Distance: 3.5m

2 Stacked Gain: 13.59dBi

2 Stacked F/B: 29.75dB

2 Stacked at 10m above real ground: 19.05dBi

REAR MOUNT AVAILABLE UPON REQUEST AND REQUIRED FOR VERTICAL MOUNTING

Specification

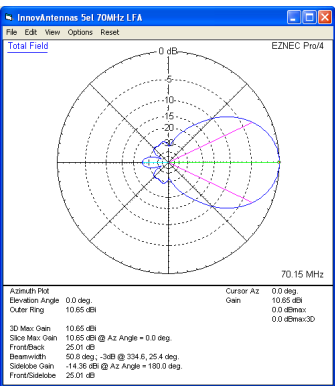
This antenna is made with single piece 3/8 inch (9.525mm) elements with a 1/2 inch (12.7mm) by 3/8 inch (9.525mm) adjustable feed loop section. The antenna has fully insulated elements which will ensure continuous, high performance for many years to come. Boom to mast brackets are included with all antennas which will support 2 inch (50mm) masts. Boom is 1.25 inch square 16SWG aluminum, **no guys**

70MHz Yagis (all): 5 element 70MHz LFA Yagi

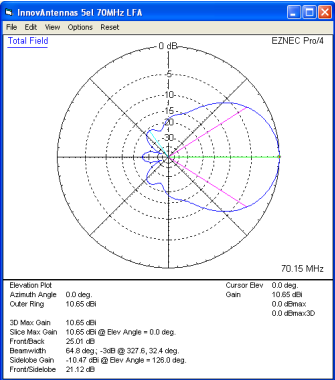
required.

Our antennas are constructed with the best quality materials in order that the best mechanical construction can be achieved, not the cheapest and most profitable! Even a digital caliper is used (with an accuracy of .01mm) to measure the elements during production to ensure they are within 0.2mm of what they should be, this ensures they work as well as our software model predicts.

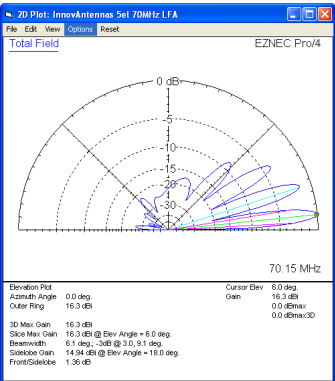
- Marine grade Stainless Steel Fittings*
- Original Stauff Insulation clamps
- Mill finished boom and elements for highest levels of accuracy



Azimuth Plot

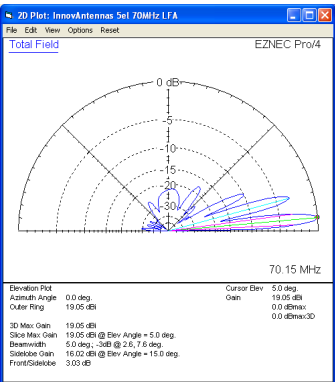


Elevation Plot

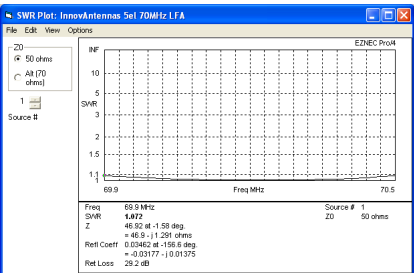


A single 5 element LFA at 10m above ground

70MHz Yagis (all): 5 element 70MHz LFA Yagi



2 x 5el LFA 3.5m apart with the bottom antenna 10m above ground



SWR



A 5el 70MHz LFA (second top) installed at G4VPD

Manufactured the right way, not the cheapest way!

* Where possible marine grade stainless steel components are used.