



Sales price £429.95

Sales price without tax £358.29
Tax amount £71.66

A Super High Gain Quad-style beam antenna for 27Mhz for high power 20KW+

Description

For exact postage costs, please [This email address is being protected from spambots. You need JavaScript enabled to view it.](#)

A 3 element 27-28MHz (500Khz sections) LFA-Q Quad-style beam antenna handles 20KW+ !. [Second Generation LFA Yagi !](#)

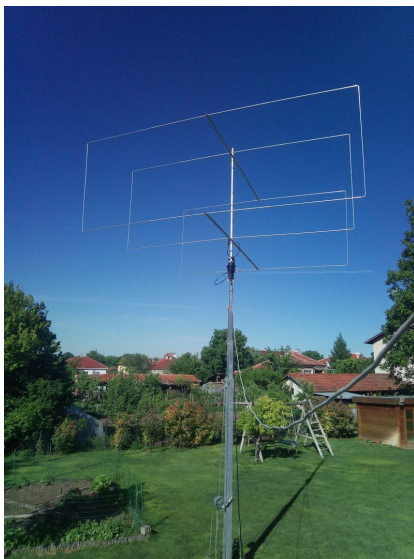
The G0KSC LFA-Q beam antenna provides a new slant on the proven quad style beam antenna. The LFA-Q is a super-strong, super-rigid Quad which provides very high levels of gain for it's size, while at the same time maximising all round performance. Hard to beat with a direct 50 Ohm feedpoint and no matching losses and suppression of unwanted noise due to the closed loop system.

The LFA-Q is one of the only 11m antennas on the market that will handle 20KW+ out of the box. If you want to run an antenna that can take power that had excellent gain, look no further than the LFA-Q!

The LFA-Q deploys 2 x 1.5" square booms, one at the top of the structure and one at the bottom, which enable the antenna to be ultra-rigid and stand up to extreme weather conditions such as severe ice and wind loading.

This 3 element LFA-Q is an excellent option if you do not have space, [especially stacked !! 2 at just 8m spacing provides 16.6dBi \(when placed 10m above ground\)!!](#)

NOTE: With all our HF antennas we can custom design your element taper and element size requirements in order to cater for all weather and installation requirements. [This email address is being protected from spambots. You need JavaScript enabled to view it.](#) e-mail address is being protected from spambots. You need JavaScript enabled to view it us for details.



2 element 27MHz Quad

Performance

Gain: 13.81dBi @ 27.5MHz 10m above average ground

F/B: 23.77dB @ 27.5MHz

Peak Gain: 14.01dBi

Peak F/B: 24.00dB

Power Rating: 15kw+

SWR: Below 1.4:1 from 27.300MHz to 27.700MHz **(Can be adjusted for CW, SSB or mixture of both)**

Stacking Distance: 6.5-9m (8m recommended)

2 Stacked Gain @ 9m spacing: 16.64dBi

2 Stacked F/B: 26dBi

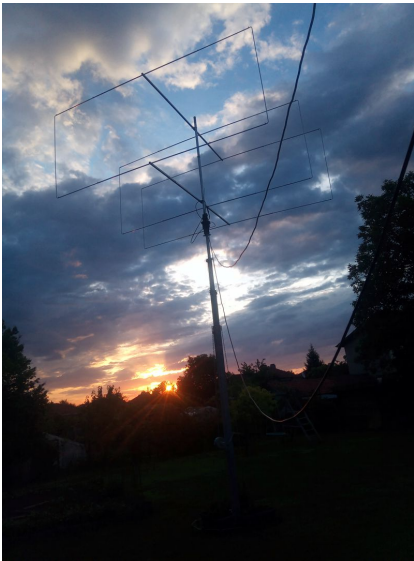
Boom Length: 3.2m

Distance between booms: 1.6m

Weight: 9KG / 20LB

Turning Radius: 2.651m / 8.7ft

Wind Survival: 184KPH



//