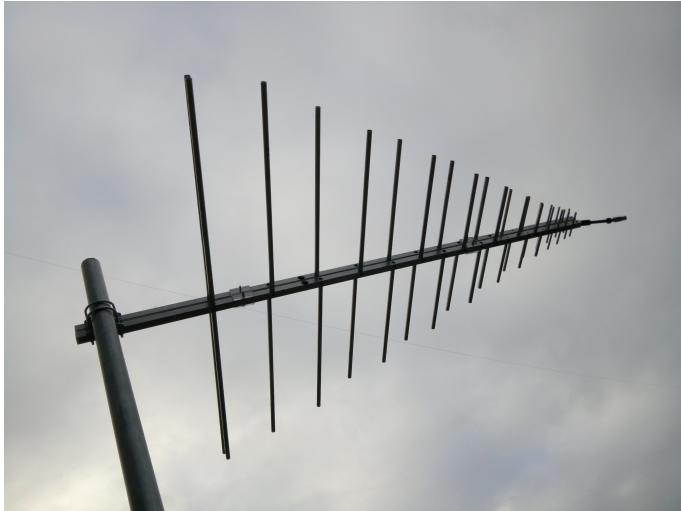


**Sales price £349.95**

Sales price without tax £291.63

Tax amount £58.33

Log Periodic Dipole Array for 100MHz to 1300MHz - Hybrid Version



## Description

**InnovAntennas design and build Log Periodic Arrays for any bandwidth and for any purpose. Our LPDA's can be designed and built for your specific needs to ensure the absolute best performance can be achieved.**

**100-LOG-1300 - 100MHz to 1300MHz Log Periodic Array (LPDA)** is a 50 $\Omega$  direct fed Directional wide band antenna for receiving and transmitting purposes. This antenna can be mounted horizontally or vertically with an optional mount.

As with all InnovAntennas products, only the highest quality materials are used including aerospace grade aluminium and **marine grade (A4) stainless steel**.

The 130-LOG-1300 uses a twin-boom arrangement as a feed line as well as a dipole support. The feedlines are fixed in spacing, it has very wide bandwidth with excellent Front to Back (F/B) as a result of the inclusion of parasitic reflectors and directors at either end of the antenna. 1/2" (12.7mm), 3/8" (9.525mm) and 1/4" (6.35mm) elements are used to ensure maximum gain and bandwidth is achieved across the whole working range. the boom is made from twin thick-wall 3/4" square tubes for a super rigid construction with twin U-clamps at the rear.

Often, LPDA's are designed with a 200 $\Omega$  feed point which ensures bandwidth. However, this results in the need for a 4:1 transforming balun which both reduces efficiency and limits any input power too. The 130-LOG-1300 has been computer optimised to present a 50 $\Omega$  feed point to allow for direct connection to coax cable and thus, power limitations are largely removed.

***For all your Log Periodic requirements, contact InnovAntennas***

### **130-LOG-1300 Specifications:**

Typical Gain: 7.7dBi (up to 8.5dBi)

Typical F/B: 20dB+ (up to 45dB F/B)

Input power (max): 1Kw

# 130MHz to 1300MHz Hybrid Log Periodic Array

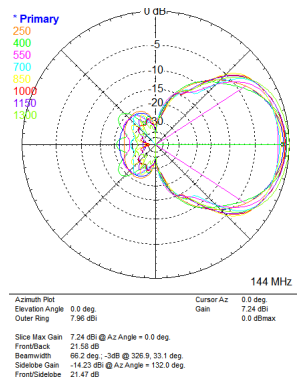
Weight: 2.7Kilos

Wind Survival: 150MPH/250KPH

Contact us with any questions you may have relating to your specific requirements

Example Pattern Overlays 144MHz, 250MHz, 400MHz, 550MHz, 700MHz, 850MHz,

1000MHz, 1150MHz, 1300MHz below:



For customer variations of this antenna or a bespoke requirement, contact sales 'at' [innovantennas.com](http://innovantennas.com)

A close-up shot of the parallel feed lines which double at rigid booms. The wall thickness of these booms is 3.2mm



Rear to front view of the 130-LOG-1300 - elements taper from 1/2" (12.7mm), to 3/8" (9.525mm) to 1/4" (6.35mm)



From under the antenna showing the full view including rear mounts and twin parasitic reflectors and directors



//